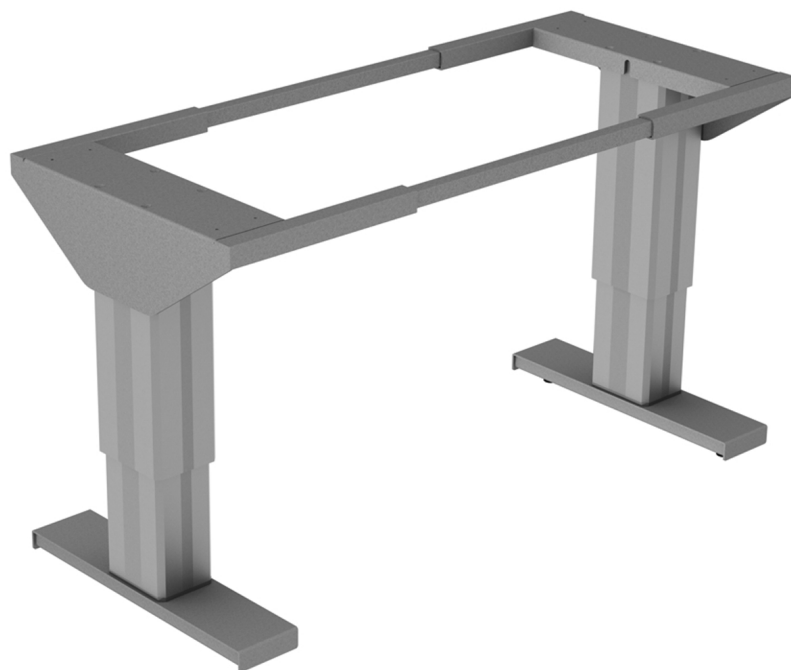


EN User manual Height adjustable table



EN Products

Height-adjustable tables
Height adjustable table - 7190

1. Introduction
2. Declaration of Conformity with EU-directives
3. Intended use
4. Technical data
5. Safe use
6. Load distribution and side forces
7. Actions after use
8. Instructions for recycling
9. Spare parts list
10. Electric system

1. Introduction

We are proud to supply you with a electric height-adjustable table.

The table can be adjusted it to a convenient working height by means of the push-button control.

The table must only be used by properly qualified persons.

Being qualified carries the obligation to read and comply with these instructions.

It is most important that you read and understand these instructions before using the changing table. If you have any questions, please contact your supplier.

This instruction booklet should be made available to the personnel concerned, stored in a safe place, and taken with the product if it is installed in a new location.

Correct use, operation, inspection and maintenance is essential for safe and efficient work.

2. Declaration of Conformity with EU-directives

This product is CE-marked and is granted to conform to the basic safety and operation requirements, in accordance with de actual Machinery, EMC- and Low voltage Directives. A separate "CE-Declaration of Conformity" is available in separate document.

3. Intended use

The table is designed for its work surface to be raised and lowered.

The table must be used indoors under normal residential conditions of temperature, humidity and lighting.

4. Technical data

Installation	Freestanding
Total width	1000 - 2000 mm
Total depth	600 mm
Height adjustment	400 mm (660 - 1060 mm excl. table top)
Speed level	30 mm / s.
Power supply voltage	230 V
Power consumption	230 W
Max. work cycles	1 / 10 min.
Operating voltage	24 V DC
Lifting force	200 kg
IP-Class	IP20
The noise pressure is less than	70 db(A)

5. Safe use

The table is designed to avoid the risk of injury and accident. However, it is still most important that the user is thoroughly familiar with the correct manner of installing and operating the table.

- The table must only be used under the conditions described in "Intended use".
- The table must be operated in a manner to avoid the risk of personal injury and material damage.
- The table must only be operated by persons who have read and understand these instructions and who are qualified to use it.
- Remember that it is your responsibility as user to ensure that nobody suffers injury.
- The table and the work area must be in good condition. The table must not be used in case of any damage or fault which affects its operational reliability or safety or if it has been repaired, modified or adjusted without the permission and approval of an authorised person.
- Make sure the table is steady and horizontal.
- The push-button unit must be located so that the operator has a clear view of the table the whole time it is moving.
- Press only the push-button for the desired direction of movement.
- Do not lower the table unless the space below is free from persons and objects.
- Only handle loads which are steadily and securely arranged.
- Never allow the table to come in contact with adjacent objects.
- Modifications of the table which impact on its operational reliability or safety are not permitted.
- Plates and markings must not be removed or obliterated.
- Do not overload the table.
- The table must undergo annual inspection in the interests of accident prevention.
- Do not operate the table in potentially explosive environments.
- If the table is used in a public environment, particularly one where children may enter the operating area, the operator shall take adequate steps to prevent persons entering the hazardous area, e.g. by cordoning off said area.
- The table surface must be clear during inspection, servicing and repair.
- Installation, service and repairs may only be carried out by persons possessing the necessary skills.
- Only original parts may be used as replacements, otherwise our warranty commitments may be null and void.

6. Load distribution and side forces

Note that the maximum load refers to a load which is spread and distributed evenly over the table surface. Point loads are not permitted.

Essential requirements for load distribution:

- **The load must be spread over the entire table surface.**
- **Lateral forces are not permitted.**

Lateral (sideways) forces can be caused e.g. by pressing against the table or the load.

It is very difficult to gauge the strength of laterally acting forces, therefore the greatest care must be exercised at all times.

Safety measures may be required on or around the table. Discuss the appropriate measures with your supplier or with a safety delegate, occupational health inspector or similar person.

We recommend drawing up a Risk Analysis for the work situation in accordance with the Machinery Directive.

If accessory equipment is installed by the user, Granberg must be contacted for approval of the load conditions.

7. Actions after use

The table shall after use be left in its current position.

Switch off the main switch and lock it in closed position, if unauthorized use can occur.

8. Instructions for recycling

Before the table is redeployed in a new location it must be cleaned, inspected, and undergo a functional test.

The table is made of materials which are suitable for recycling or reuse. Specialised firms collect and dismantle worn-out machinery and recover reusable parts and materials.

9. Spare parts list

If any part does not seem to be working or is broken, contact your supplier.

Only original parts must be used, otherwise all warranty commitments may be void.

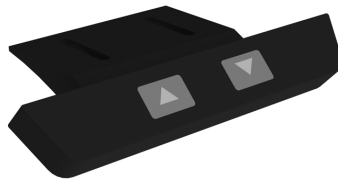
Returning parts:

Contact your supplier before returning parts. Do not return parts which are worn out through normal use or damaged by accident. Return worn, damaged or unserviceable parts if you believe the fault is covered by Warranty. In this case return the parts promptly, otherwise you may forfeit your rights under Warranty.

When ordering parts, please quote the changing table serial number and type.



Control box



Push button

10. Electric system

1. Power supply 220 V AC
2. Control box
3. Motor
4. Push button

