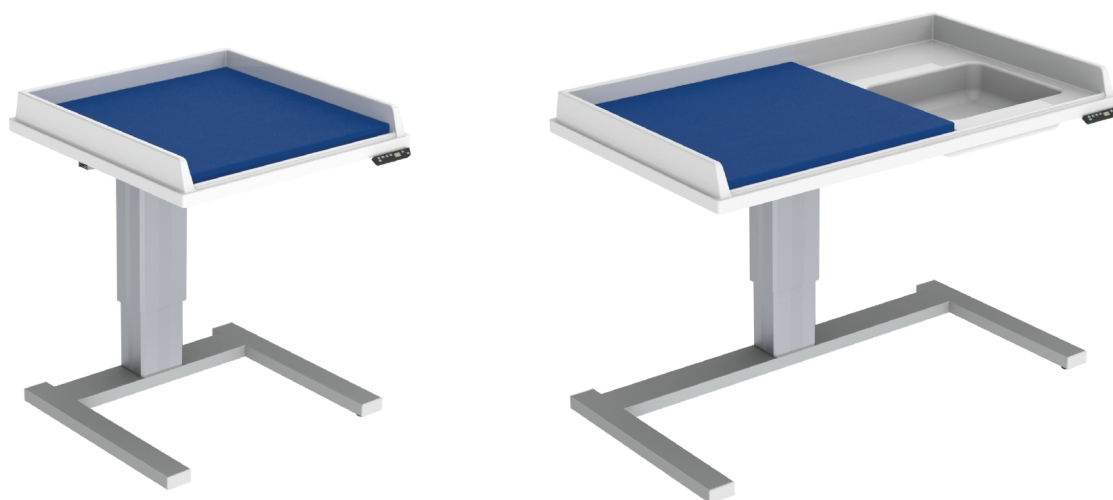


EN Installation instructions Changing table 333



EN Products

Height Adjustable Daycare Changing Tables

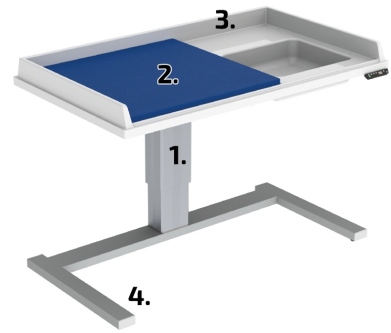
Height Adjustable Changing Table Granberg 333

Height Adjustable Changing Table Granberg 333 - Laundry sink

1. Mechanical construction
2. Delivery modules
3. Electrical connection
4. Location of changing table
5. Functional test

1. Mechanical construction

1. Motor
2. Mattress
3. ABS plastic with integrated border
4. Stand with adjustable feet

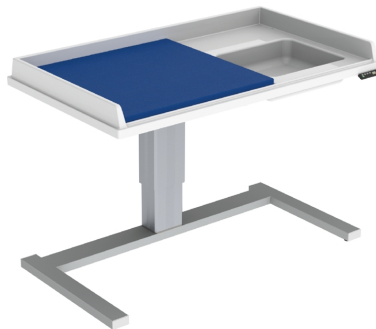


2. Delivery modules

The changing table is delivered assembled on a pallet.



333 - 80 cm



333 - 140 cm with sink

3. Electrical connection

The changing table must be connected to a nearby main switch.

If the table is installed in a wet room, wet room regulations must be observed. The motor power supply must always be provided with an earth fault circuit breaker.

Connect the table to a 230V 50Hz power outlet. The outlet must be out of reach of children, remembering that the changing table surface can be raised and lowered.

Cables must be routed and fixed with care to avoid the risk of pinching.

* Power requirement 230 W.

Electrical connections must be made by a qualified electrician.

4. Location of changing table

Take care to locate the changing table so as to avoid pinching hazards. The distance to any adjacent fitting must be at least 50 mm.

If the distance from the changing surface to a wall or an adjacent fitting is less than 50 mm, a pinching hazard exists.

It is the responsibility of the installer and the user to locate the changing table so that pinching hazards are avoided.

Adjust the feet so that the table is standing stable at the floor.

5. Functional test

- Minimum distance to any adjacent fitting must be at least 50 mm.
If the distance from the changing surface to a wall or an adjacent fitting is less than 50 mm, a pinching hazard exists.
- Check that the changing table is firmly in place. If necessary, adjust the adjustable feet under the frame.
- Run the changing table down and up all the way to respectively end position. Check that it moves freely, without hindrance and jarring sounds.
- Check that no cables are jammed.
- If the changing table does not reach the lowest position:
Press the down button for 5 seconds until the control box clicks. When the control box clicks the synchronisation is ok.
- Model with sink:
Run the changing table to the end position and make sure the hoses are long enough above the fixing point.