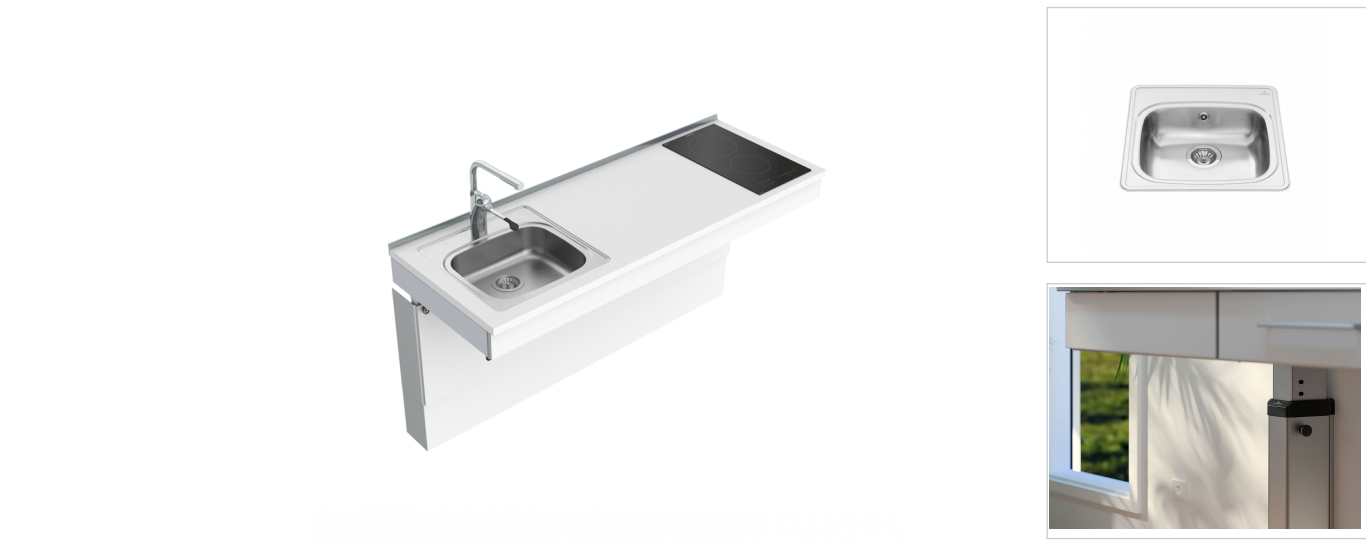


Draft specification



Mini kitchen module 6380-ES11S2, Left incl. worktop with 1 sink bowl. Prepared for hob with 2 cooking zones, width 119 cm
Manufacturer: Granberg

The combination includes the following products

Wall mounted, Manually Height Adjustable Mini kitchen module - 6380-ES11S2. The module contains one shallow sink bowl with overflow. Prepared for glass ceramic hob with two cooking zones.

The module is available in left or right version.

The modules have a 10 mm shorter width to automatically give 5 mm gap on either side of the unit for the up and down movement. They are also 15 mm shallower in depth to make room for splash protection/tiles.

The module can be integrated into environments from any kitchen manufacturer.

Art.no	Description	EAN	Qty
6380HA-119	MANULIFT 6380HA - 119,0 cm	7340193103724	1.00 pcs
385H-119	103 mm Alu-Front, 119.0 cm width		1.00 pcs
6260-005	Fitting kit for cover panels 6260-240 - Baselift & Manulift	7340193108286	1.00 pcs
6260-240	Cover panels, Worktop lifts (59.0-240.0 cm) - Baselift & Manulift	7340193108279	1.00 pcs
M-BSA	Countertop - Laminate, 450-610 mm depth		1.19 m
6943-06	Rear edge trim ALU for worktop, (per meter)	7340193105520	1.19 m
618ES11-050	Inset Kitchen Sink stainless Steel ES11 - 49,6 cm - Incl. flexible plumbing kit	7340193105100	1.00 pcs
M-BSUL	Built-under stainless steel sink		1.00 pcs
60210	Granberg mixer tap 60210 Incl. dishwasher shut off	7340193105315	1.00 pcs
61800	Flexible water hoses 2-pack, 3/8, length 500mm	7340193105346	1.00 pcs
65220	Cooktop - 30 cm		* 1.00 pcs
** *Not available in this region* **			

Specifications

Installation

Wall

Front height

103 mm

Height adjustment

Manually adjustable by 300 mm in intervals of 25 mm (700-1000 mm excl. top board)

A built-in gas spring facilitates height adjustment:

Pull out the locking pin, adjust the height with the help of the gas spring. Lock the position with the locking pin.

Max load

100 kg

Delivery modules

Ready-mounted worktop incl. wall-mounted brackets

Frame depth

576 - 606 mm from wall (Incl. front)

Material

Frame:

Aluminum

Cover panels for covering installations under the worktop:

12 mm white melamine. Several colours can be offered upon request.

Fronts:

White lacquered aluminum. Several colours can be offered upon request.

Top board:

30 mm worktop in high pressure laminate. Post-shaped front edge. Several colours can be offered upon request.

Plumbing connections

Connection is made with flexible hoses

Space to wall / adjoining cabinet

5 mm

Space to wall (for tiles)

15 mm

Tiling

From 700 mm above floor (alternatively all the way down to the floor)

