

Draft specification



Mini kitchen module 6380-ESFS, Left incl. stainless steel sink with 1 bowl. Prepared for hob with 2 cooking zones, width 99 cm
Manufacturer: Granberg

The combination includes the following products

Wall mounted, Manually Height Adjustable Mini kitchen module - 6380-ESFS. The module contains stainless steel sink with one shallow sink bowl. It is prepared for glass ceramic hob with two cooking zones.

The module is available in left or right version.

The modules have a 10 mm shorter width to automatically give 5 mm gap on either side of the unit for the up and down movement. They are also 15 mm shallower in depth to make room for splash protection/tiles.

The module can be integrated into environments from any kitchen manufacturer.

| Art.no | Description | EAN | Qty |
|--------------------------------------|--|---------------|------------|
| 6380HA-099 | MANULIFT 6380HA - 99,0 cm | 7340193103687 | 1.00 pcs |
| 385H-099 | 103 mm Alu-Front, 99.0 cm width | | 1.00 pcs |
| 6260-005 | Fitting kit for cover panels 6260-240 - Baselift & Manulift | 7340193108286 | 1.00 pcs |
| 6260-240 | Cover panels, Worktop lifts (59.0-240.0 cm) - Baselift & Manulift | 7340193108279 | 1.00 pcs |
| 6943-06 | Rear edge trim ALU for worktop, (per meter) | 7340193105520 | 0.99 m |
| 617ESFS-099 | Sit-on sink, mini kitchen, for hob 99.0 cm - GRANBERG ESFS | 7340193105247 | 1.00 pcs |
| 60210 | Granberg mixer tap 60210 Incl. dishwasher shut off | 7340193105315 | 1.00 pcs |
| 61800 | Flexible water hoses 2-pack, 3/8, length 500mm | 7340193105346 | 1.00 pcs |
| 65220 | Cooktop - 30 cm | | * 1.00 pcs |
| ** *Not available in this region* ** | | | |

Specifications

Installation

Wall

Front height

103 mm

Height adjustment

Manually adjustable by 300 mm in intervals of 25 mm (700-1000 mm excl. top board)

A built-in gas spring facilitates height adjustment:

Pull out the locking pin, adjust the height with the help of the gas spring. Lock the position with the locking pin.

Max load

100 kg

Delivery modules

Ready-mounted worktop incl. wall-mounted brackets

Frame depth

576 - 606 mm from wall (Incl. front)

Material

Frame:

Aluminum

Cover panels for covering installations under the worktop:

12 mm white melamine. Several colours can be offered upon request.

Fronts:

White lacquered aluminum. Several colours can be offered upon request.

Sink:

Smooth stainless steel sheet. Raised edge around the entire sink.

Thickness: 30 mm

Height adjustment

Manually adjustable by 300 mm in intervals of 25 mm (700-1000 mm excl. top board)

A built-in gas spring facilitates height adjustment:

Pull out the locking pin, adjust the height with the help of the gas spring. Lock the position with the locking pin.

Max load

100 kg

Frame depth

560-590 mm from wall

Dimensions cover plates

2 pcs, width = width of the lift -10 mm, height 438 mm, thickness 12-20 mm

Width worktop

Width = width of the lift

Depth worktop

565-630 mm (15 mm shallower than worktops on fixed cabinets)

Space to wall / adjoining cabinet

5 mm

Space to wall (for tiles)

15 mm

Tiling

From 700 mm above floor (alternatively all the way down to the floor)

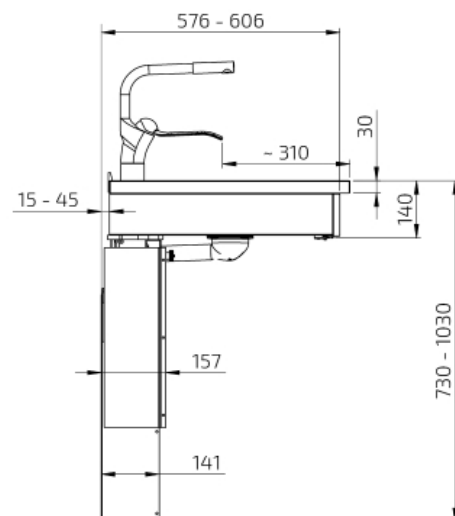
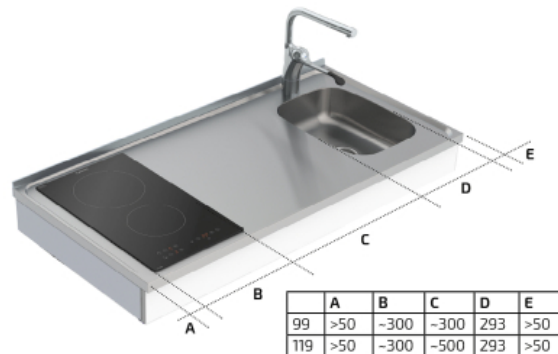
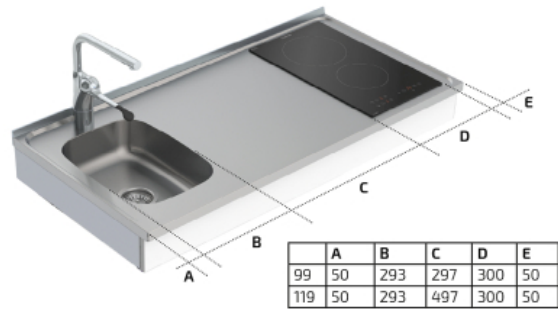
Delivery modules

Ready-mounted worktop incl. wall-mounted brackets

Fittings supplied

Bracket for fronts and top board

Material



Aluminium frame